



Fort Royal Hill, Worcester, WR5 1BT

£575,000

🛏 4 🚿 2 🛋 4



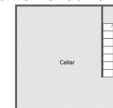
A splendid, double fronted substantial Victorian home within close proximity to the city centre which is full of charm and character to include; high ceilings, deep skirting boards and fireplaces. This property has an abundance of space, which is spread over three floors, creating versatile living. The property in brief comprises; lounge, family room, dining room, garden room, kitchen, w/c, utility, lean-to, study, four bedrooms, ensuite and bathroom. The property benefits from gas central heating, loft room, cellar, rear garden and parking. Viewing is recommended to appreciate the size and location.





Fort Royal Hill, Worcester

Lower Ground Floor



Ground Floor



First Floor



Second Floor



For illustrative purposes only. Decorative finishes, fixtures & fittings do not represent the current state of the property. Measurements are approximate & not to scale. Floor Plans made using RoomSketcher.

Energy Efficiency Rating

	Current	Potential
Very energy efficient - lower running costs		
(92 plus) A		
(81-91) B		
(69-80) C		74
(55-68) D		
(39-54) E	50	
(21-38) F		
(1-20) G		
Not energy efficient - higher running costs		
England & Wales	EU Directive 2002/91/EC	

For more information on this house or to arrange a viewing please call the office on:

01905 958 290

Alternatively, you can scan the QR to view all of the details of this property online.



arden
ESTATE AGENTS